

# pixxiLCD-39P4 Series

pixxiLCD-39P4  
pixxiLCD-39P4-CTP

## Datasheet

Revision 1.1

Copyright © 2024 4D Systems

Content may change at any time. Please refer to the resource centre for latest documentation.

# Contents

---

1. Description	4
2. Features	0
3. Typical Applications	0
4. Hardware Overview	0
5. Hardware Interface - Pins	0
5.1. Serial Ports - TTL Level	0
5.2. General Purpose I/O	0
5.3. I2C Interface	0
5.4. System Pins	0
6. microSD / Flash Memory	0
7. Display Features	0
7.1. PIXXI-44 Processor	0
7.2. SD/SDHC Memory Cards	0
7.3. FAT16	0
8. Display/Module Precautions	0
9. Hardware Tools	0
9.1. 4D-UPA Programming Adaptor	0
9.2. Interface Board	0
10. Programming Language	0
11. Workshop4 IDE	0
11.1. PmmC Programming	0
12. Display Module Part Numbers	0
13. Starter Kit	0
14. Mechanical Details (Non-Touch and Capacitive Touch)	0
15. Schematic Details - REV 2.1	0
16. Specifications	0
17. Revision History	0

18. Legal Notice	0
18.1. Proprietary Information	0
18.2. Disclaimer of Warranties & Limitations of Liabilities	0

## 1. Description

The pixxiLCD-39 is part of the new and revolutionary pixxiLCD series of embedded graphics displays designed and manufactured by 4D Systems. Developed with a low total cost of ownership in mind, this 3.9" colour IPS TFT-LCD compact Intelligent Display module offers an array of functionality and options for any designer, integrator or user.

The 3.9" display is IPS, making it have very wide viewing angles.

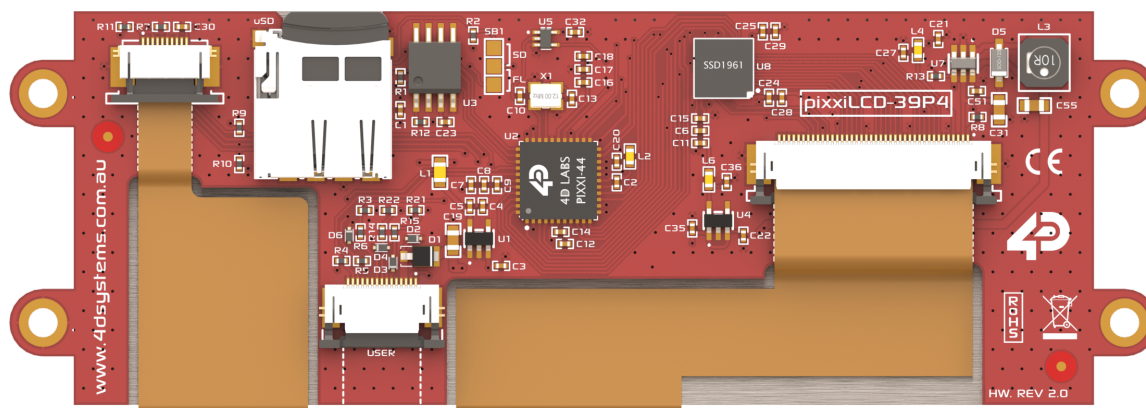
The pixxiLCD-39 is powered by the configurable PIXXI-44 graphics processor, allowing various functionalities such as touch detection, microSD or serial flash memory storage, and GPIO, along with multiple millisecond resolution timers, and UART and I2C communications.

The pixxiLCD-39 embedded graphics displays come in two variants:

- Non-touch (pixxiLCD-39P4)
- Capacitive touch (pixxiLCD-39P4-CTP w/o CLB)

The pixxiLCD embedded graphics displays are 100% compatible with the Workshop4 IDE, which provides users with a wealth of options for programming and controlling their system.

The pixxiLCD embedded graphics displays feature a standard 15-way, 0.5mm pitch ZIF Socket interface which carries the UART, I/O, I2C, power, and reset signals to/from the display.



*The pixxiLCD-39P4-CTP*